

Robin Industrial Engines®

PARTS MANUAL

Model

EY08

1193P201



ROBIN AMERICA, INC.
ROBIN TO WISCONSIN ROBIN
ENGINE MODEL CROSS REFERENCE LIST

ROBIN

WISCONSIN ROBIN

SIDE VALVE

| | |
|--------|---------|
| EY08 | W1-080 |
| EY15 | W1-145 |
| EY15V | W1-145V |
| EY20 | W1-185 |
| EY20V | W1-185V |
| EY23 | W1-230 |
| EY28 | W1-280 |
| EY35 | W1-340 |
| EY40 | W1-390 |
| EY45V | W1-450V |
| EY21 | EY21W |
| EY44 | EY44W |
| EY18-3 | EY18-3W |
| EY25 | EY25W |
| EY27 | EY27W |

OVERHEAD VALVE

| | |
|-------|----------|
| EH11 | WO1-115 |
| EH12 | WO1-120 |
| EH15 | WO1-150 |
| EH17 | WO1-170 |
| EH21 | WO1-210 |
| EH25 | WO1-250 |
| EH30 | WO1-300 |
| EH30V | WO1-300V |
| EH34 | WO1-340 |
| EH34V | WO1-340V |
| EH43V | WO1-430V |

TWO CYCLE

| | |
|-------|----------|
| EC13V | WT1-125V |
|-------|----------|

DIESEL

| | |
|------|----------|
| DY23 | WRD1-230 |
| DY27 | WRD1-270 |
| DY30 | WRD1-300 |
| DY35 | WRD1-350 |
| DY41 | WRD1-410 |

HOW TO USE THIS PARTS CATALOG

All Robin Industrial Engines have a Production number to identify their specification. The Production number is a 15 digit, alphanumeric number. The first 11 digits are classified as the specification number of the engine. The last 4 digits are the manufacturing code. An example is shown below:

| | |
|---------------------|-------------|
| (PRODUCTION NUMBER) | |
| <u>EY400DD1650</u> | <u>XXXX</u> |
| (SPECIFICATION #) | (CODE) |

All 15 digit production numbers will be located in one of the following locations depending upon the engine model. The number will either be stamped onto a cylinder baffle or attached to one of the other locations by an easily visible label.

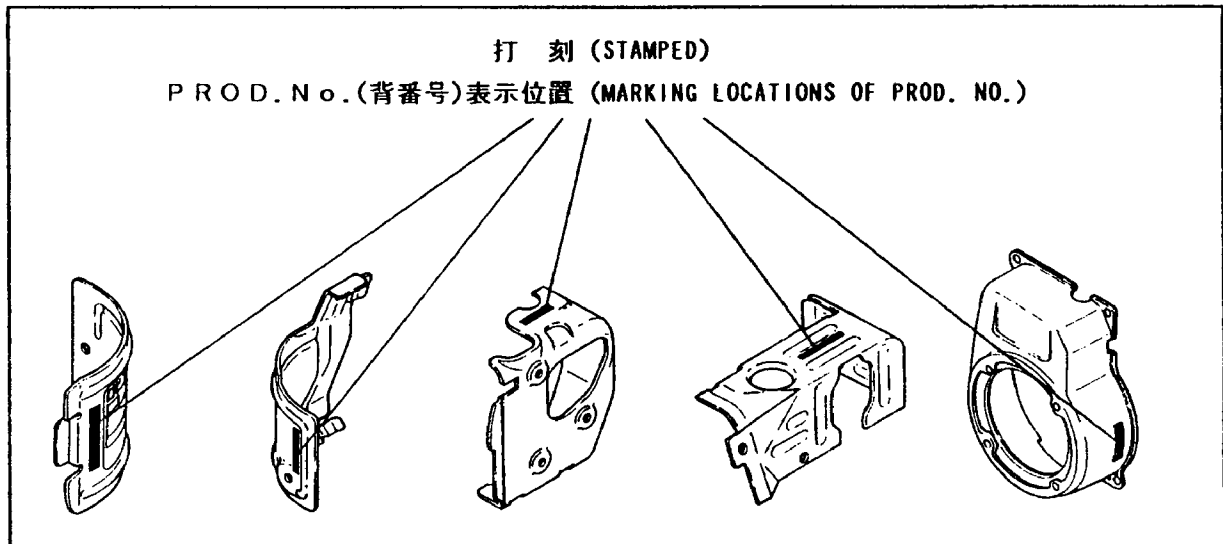
MARKING LOCATIONS OF PRODUCTION NUMBER

PROD.No.

How to check PROD. No.

PROD.No.(背番号)は、下記により確認して下さい。

Check PROD. No. as illustrated below.



PROD.No.(背番号)15桁は、シリンダーバッフル上に打刻、又はブローハウジングなど見易い位置にラベルの貼付など、いずれかで表示されています。

PROD.No. with 15 characters is marked either by stamping on the cylinder baffle or by sticking label to easily visible locations such as on the blower housing.

PROD.No.(背番号)

表示例

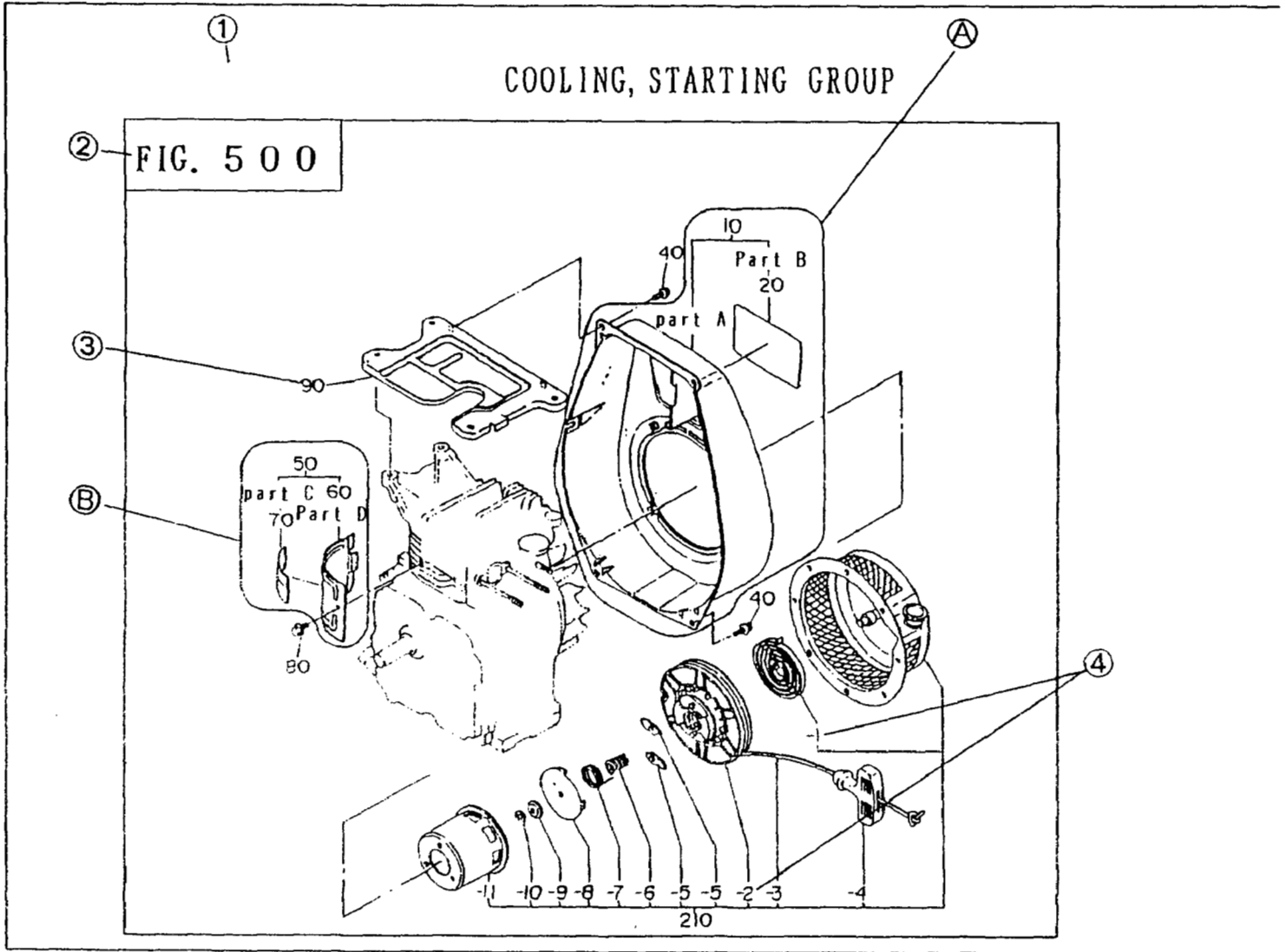
Marking example

PROD.No.○○△△□□□□□□××××

PROD.No.○○△△□□□□□□

××××

How to find the part of your need



NOTE: Some of the parts shown may be somewhat different from their actual shape and location. The illustrations of this catalog are intended to assist in ordering the correct part(s).

[TERMS]

(1) Group..... Parts are classified into functional groups. Refer to the group index for specific groups.

(2) Fig. No. Indicates illustration number and corresponds to the FIG. NO. in the list.

(3) Ref. No. Corresponds to Ref. No. in parts list.

Example A.... The part indicated by Ref. No. 10 consists of part A and B. Part A is available either in the form of an assembly, Ref. No. 10(A), or as a complete unit, A (CP). Part B is available as a part by itself.

Example B.....Parts C and D are available either as an assembly, Ref. No. 50(A) or as a complete unit, (CP). Both parts are available as a part by itself.

(4) Sub-divided Ref. No.....Refers to a separate part within a group that is available as an independent part.

⑥ ⑦ ⑧ ⑨ ⑩
COOLING, STARTING GROUP

| REF NO. | 部品番号 PART NUMBER | 部品名称 PART NAME | 数量 QTY | 備 考 RE M A R K S | 管理番号 CODE NO. FROM-TO | 小売単価 UNIT PRICE | FIG. NO. |
|---------|---------------------|------------------------------------|-----------|---------------------|-----------------------------|--------------------|----------|
| ③ 10 | 234-51201-01 | ブロワ-ハウジング CP BLOWER HOUSING CP | 1 | D形用 for D type | - | | 500 ② |
| | 234-51101-01 | ブロワ-ハウジング CP BLOWER HOUSING CP | 1 | B形用 for B type | - | | 500 |
| 20 | 234-91701-03 | ラベル(トレード マーク) LABEL(TRADE MARK) | 1 | | - | | 500 |
| ⑤ 50 | 234-52602-01 | シリンダ バッフル CP CYLINDER BAFFLE CP | 1 | D形用 for D type | - | | 500 |
| | 234-52601-01 | シリンダ バッフル CP CYLINDER BAFFLE CP | 1 | B形用 for B type | - | | 500 ④ |
| 60 | 234-52601-03 | シリンダ バッフル CYLINDER BAFFLE | 1 | | - | | 500 |
| 70 | 234-91802-03 | ラベル(エンジン 名称) LABEL(ENGINE NAME) | 1 | D形用 for D type | - | | 500 |
| | 234-91801-03 | ラベル(エンジン 名称) LABEL(ENGINE NAME) | 1 | B形用 for B type | - | | 500 |
| 80 | 011-00600-20 | フランジ ボルト FLANGE BOLT | 1 | | - | | 500 |
| 90 | 234-52701-23 | ヘッド カバー HEAD COVER | 1 | | 0091- | | 500 ⑤ |
| | 234-52701-13 | ヘッド カバー HEAD COVER | 1 | | 0001-0090 | | 500 |
| | 234-52701-03 | ヘッド カバー HEAD COVER | 1 | | -0000 | | 500 |
| 210 | 234-50211-00 | リコイル スタート AY RECOIL STARTER AY | 1 | | - | | 500 |
| ④ 1 | 106-50116-08 | スパイラル スプリング SPIRAL SPRING | 1 | | - | | 500 |
| - 2 | 207-50122-18 | リール CP REEL CP | 1 | | - | | 500 |
| - 3 | 106-50113-08 | スタート ロープ STARTER ROPE | 1 | | - | | 500 |
| - 4 | 206-50101-08 | スタート ノブ STARTER KNOB | 1 | | - | | 500 |

(5) Part No.....Part number assigned to part used in the applicable product. Is the number to be ordered.

(6) Part Name..Brief description of part number..

(7) Quantity....Number of parts required for particular part number in applicable product.

(8) Remarks....Additional information (if applicable) required for applicable product.

(9) Code No... Indicates modification records and provides identification of the part used in the items with Production No. by referring to the Code No.

Example (C)

[-] The part has been continuously used in the applicable product regardless of Code No.

Example (D)

[0091-] Part used in the products with code number after 0091.

[0001-0091] Part used in the products with code number between 0001 - 0091.

[- 0000] Part used in the products with code number before 0000.

(10) Unit Price..Refer to Robin America published Parts Price Catalog for pricing.

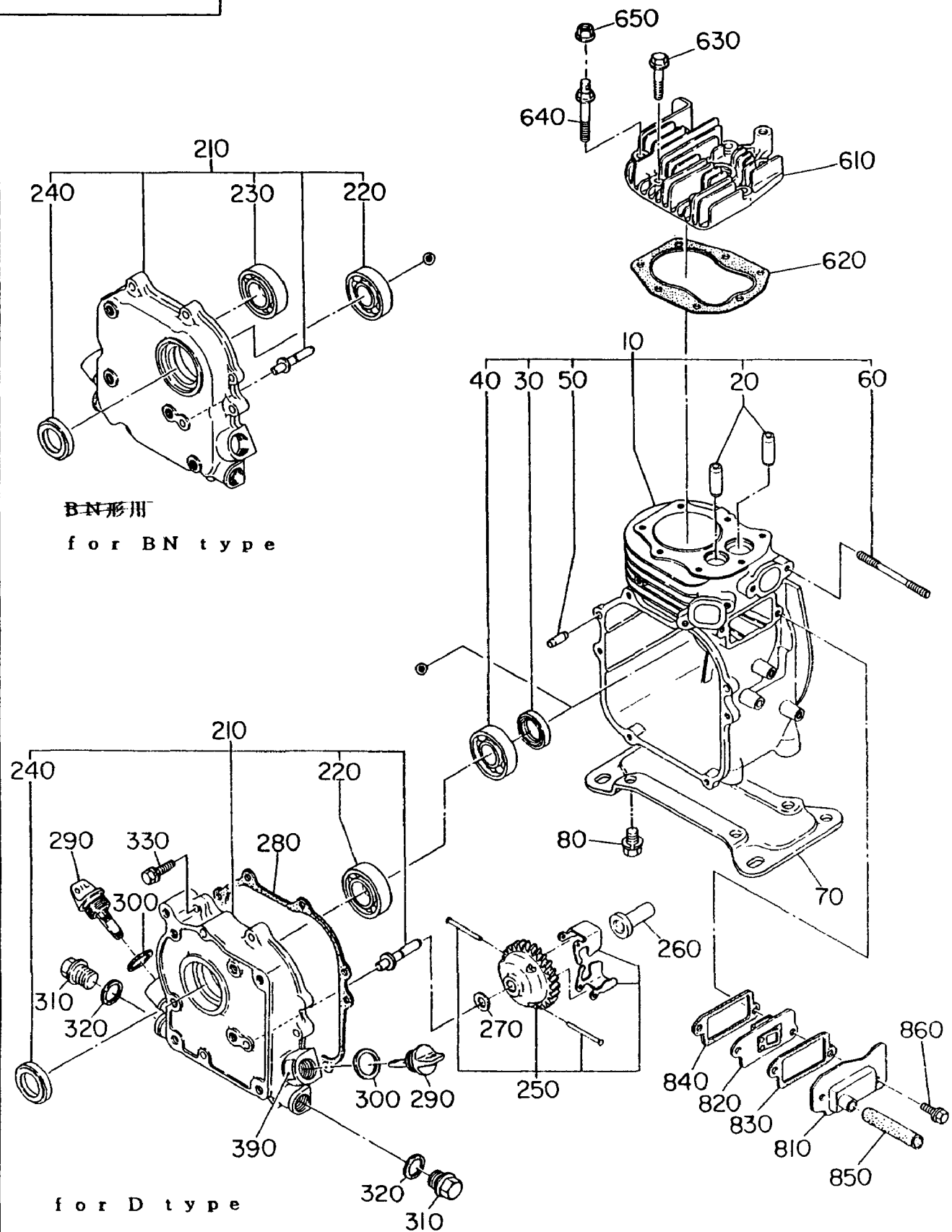
[Note] Information on parts for Engines with a Code Number before 0001 and without a Production No. stamped on the engines are available by providing the engine serial number found stamped on the crankcase of the engine.

GROUP INDEX

| GROUP NAME | FIG. NO. | PAGE |
|-------------------------|----------|------|
| CRANKCASE | 100 | 2 |
| CRANK, PISTON..... | 200 | 4 |
| INTAKE, EXHAUST..... | 300 | 6 |
| GOVERNOR, OPERATE | 400 | 8 |
| COOLING, STARTING..... | 500 | 10 |
| FUEL, LUBRICANT | 600 | 12 |
| ELECTRIC DEVICE | 700 | 16 |
| for OIL SENSOR | 760 | 18 |

CRANKCASE GROUP

FIG. 100



CRANKCASE GROUP

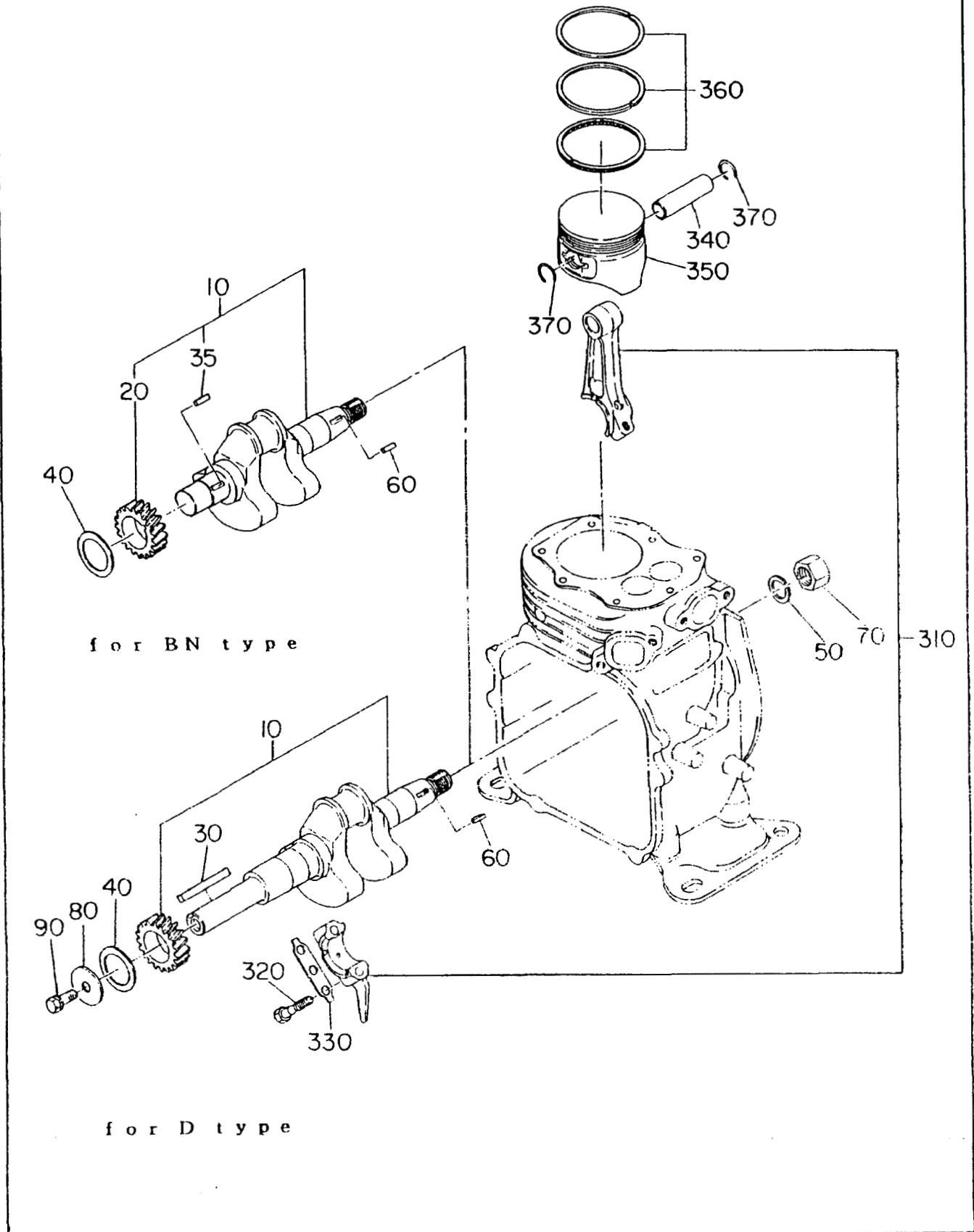
| REF. | PART NUMBER | PART NAME | QTY | REMARKS | CODE NO. FROM-TO | INTERCHANGEABLE PART NUMBER | UNIT PRICE | FIG. |
|------|--------------|-----------------------|-----|---------|---------------------|--------------------------------|---------------|------|
| 10 | 230-10102-31 | CRANK CASE CP | 1 | | - | | | 100 |
| 20 | 230-14202-03 | VALVE GUIDE | 2 | | - | | | 100 |
| 30 | 044-01700-20 | OIL SEAL | 1 | | - | | | 100 |
| 40 | 060-01700-30 | BALL BEARING | 1 | | - | | | 100 |
| 50 | 031-00600-20 | DOWEL PIN | 2 | | - | | | 100 |
| 60 | 010-50602-30 | STUD | 2 | | - | | | 100 |
| 70 | 230-13401-01 | BASE CP | 1 | | - | | | 100 |
| 80 | 001-13081-80 | BOLT AND WASHER AY | 4 | | - | | | 100 |
| 210 | 230-11003-21 | MAIN BEARING COVER C | 1 | | - | | | 100 |
| 220 | 060-02001-00 | BALL BEARING | 1 | | - | | | 100 |
| 240 | 044-02000-70 | OIL SEAL | 1 | | - | | | 100 |
| 250 | 230-45003-01 | GOVERNOR GEAR CP | 1 | | - | | | 100 |
| 260 | 205-41901-03 | GOVERNOR SLEEVE | 1 | | - | | | 100 |
| 280 | 230-16001-03 | GASKET (BEARING COV) | 1 | | - | | | 100 |
| 290 | 230-63601-03 | OIL GAUGE | 2 | | - | | | 100 |
| 300 | 021-31600-10 | GASKET | 2 | | - | | | 100 |
| 310 | 040-11400-30 | PLUG | 2 | | - | | | 100 |
| 320 | 021-11400-20 | GASKET | 2 | | - | | | 100 |
| 330 | 001-13062-50 | BOLT AND WASHER AY | 6 | | - | | | 100 |
| 610 | 230-13001-03 | CYLINDER HEAD | 1 | | - | | | 100 |
| 620 | 230-15001-01 | GASKET CP (HEAD) | 1 | | - | | | 100 |
| 630 | 011-00600-90 | FLANGE BOLT | 5 | | - | | | 100 |
| 640 | 010-00602-10 | BOLT | 2 | | - | | | 100 |
| 650 | 002-38060-00 | FLANGE NUT | 2 | | - | | | 100 |
| 810 | 230-14301-01 | TAPPET COVER CP | 1 | | - | | | 100 |
| 820 | 230-14401-01 | BREATHER PLATE CP | 1 | | - | | | 100 |
| 830 | 230-16006-03 | GASKET (TAPPET COVER) | 1 | | - | | | 100 |
| 840 | 230-16007-03 | GASKET (BREATHER) | 1 | | - | | | 100 |
| 850 | 085-10800-00 | RUBBER PIPE | 1 | 8X11XM | - | | | 100 |
| 860 | 011-00600-20 | FLANGE BOLT | 2 | | - | | | 100 |
| 960 | 230-99001-07 | GASKET SET | 1 | | - | | | 100 |
| | | | | | | | | |
| | | | | | | | | |
| | | | | | | | | |
| | | | | | | | | |
| | | | | | | | | |

93/09/28

EY080YD0030 EX. R/A-STD. .

CRANK, PISTON GROUP

FIG. 200



for BN type

for D type

CRANKSHAFT, PISTON GR

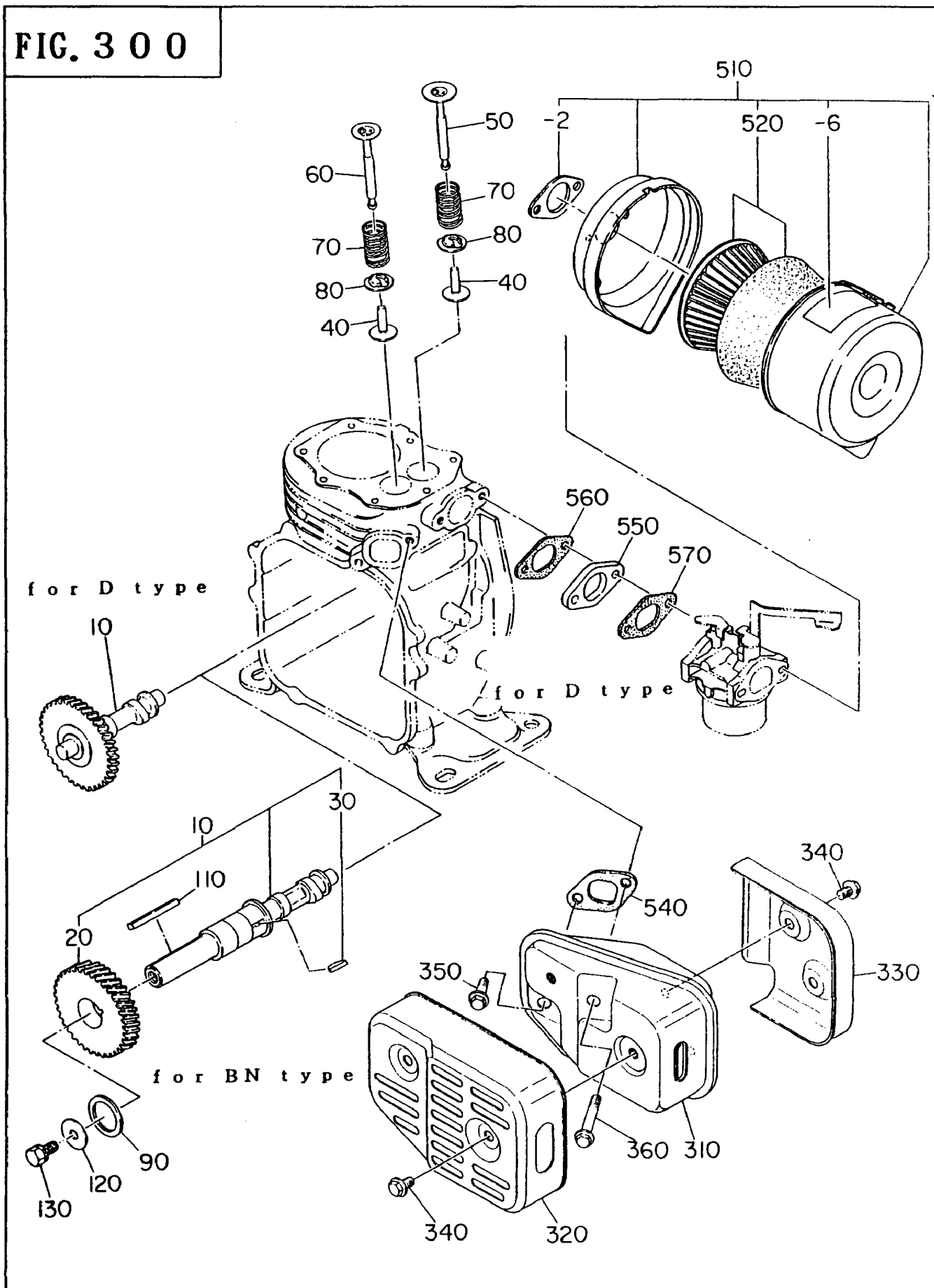
| REF. | PART NUMBER | PART NAME | QTY | REMARKS | CODE NO. FROM-TO | INTERCHANGEABLE PART NUMBER | UNIT PRICE | FIG. |
|------|--------------|----------------------|-----|--------------------|---------------------|--------------------------------|---------------|------|
| 10 | 230-20701-11 | CRANKSHAFT CP | 1 | | - | | | 200 |
| 40 | 023-02001-00 | SPACER | 1 | T=0.8 SELECTIVE AY | - | | | 200 |
| | 023-02001-10 | SPACER | 1 | T=1.0 SELECTIVE AY | - | | | 200 |
| | 023-02001-20 | SPACER | 1 | T=1.2 SELECTIVE AY | - | | | 200 |
| 50 | 003-20120-00 | SPRING WASHER | 1 | | - | | | 200 |
| 60 | 005-32031-01 | WOODRUFF KEY | 1 | | - | | | 200 |
| 70 | 002-18120-00 | NUT | 1 | | - | | | 200 |
| 310 | 230-22501-10 | CONNECTING ROD AY | 1 | | - | | | 200 |
| 320 | 230-23001-13 | CONNECTING ROD BOLT | 2 | | - | | | 200 |
| 340 | 230-23301-03 | PISTON PIN | 1 | | - | | | 200 |
| 350 | 230-23401-03 | PISTON STD | 1 | STD | - | | | 200 |
| | 230-23402-03 | PISTON 0.25 | 1 | 0.25 OVERSIZE | - | | | 200 |
| | 230-23403-03 | PISTON 0.50 | 1 | 0.50 OVERSIZE | - | | | 200 |
| 360 | 230-23501-07 | PISTON RING SET | 1 | STD | - | | | 200 |
| | 230-23502-07 | PISTON RING SET 0.25 | 1 | 0.25 OVERSIZE | - | | | 200 |
| | 230-23503-07 | PISTON RING SET 0.50 | 1 | 0.50 OVERSIDE | - | | | 200 |
| 370 | 056-51100-10 | CLIP | 2 | | - | | | 200 |
| | | | | | | | | |
| | | | | | | | | |
| | | | | | | | | |
| | | | | | | | | |
| | | | | | | | | |
| | | | | | | | | |
| | | | | | | | | |
| | | | | | | | | |
| | | | | | | | | |
| | | | | | | | | |
| | | | | | | | | |
| | | | | | | | | |
| | | | | | | | | |
| | | | | | | | | |
| | | | | | | | | |
| | | | | | | | | |
| | | | | | | | | |
| | | | | | | | | |
| | | | | | | | | |
| | | | | | | | | |
| | | | | | | | | |
| | | | | | | | | |
| | | | | | | | | |
| | | | | | | | | |
| | | | | | | | | |
| | | | | | | | | |
| | | | | | | | | |
| | | | | | | | | |
| | | | | | | | | |
| | | | | | | | | |
| | | | | | | | | |
| | | | | | | | | |
| | | | | | | | | |
| | | | | | | | | |
| | | | | | | | | |

93/09/28

EY080YD0030 EX. R/A-STD.

INTAKE, EXHAUST GROUP

FIG. 300



INTAKE, EXHAUST GROUP

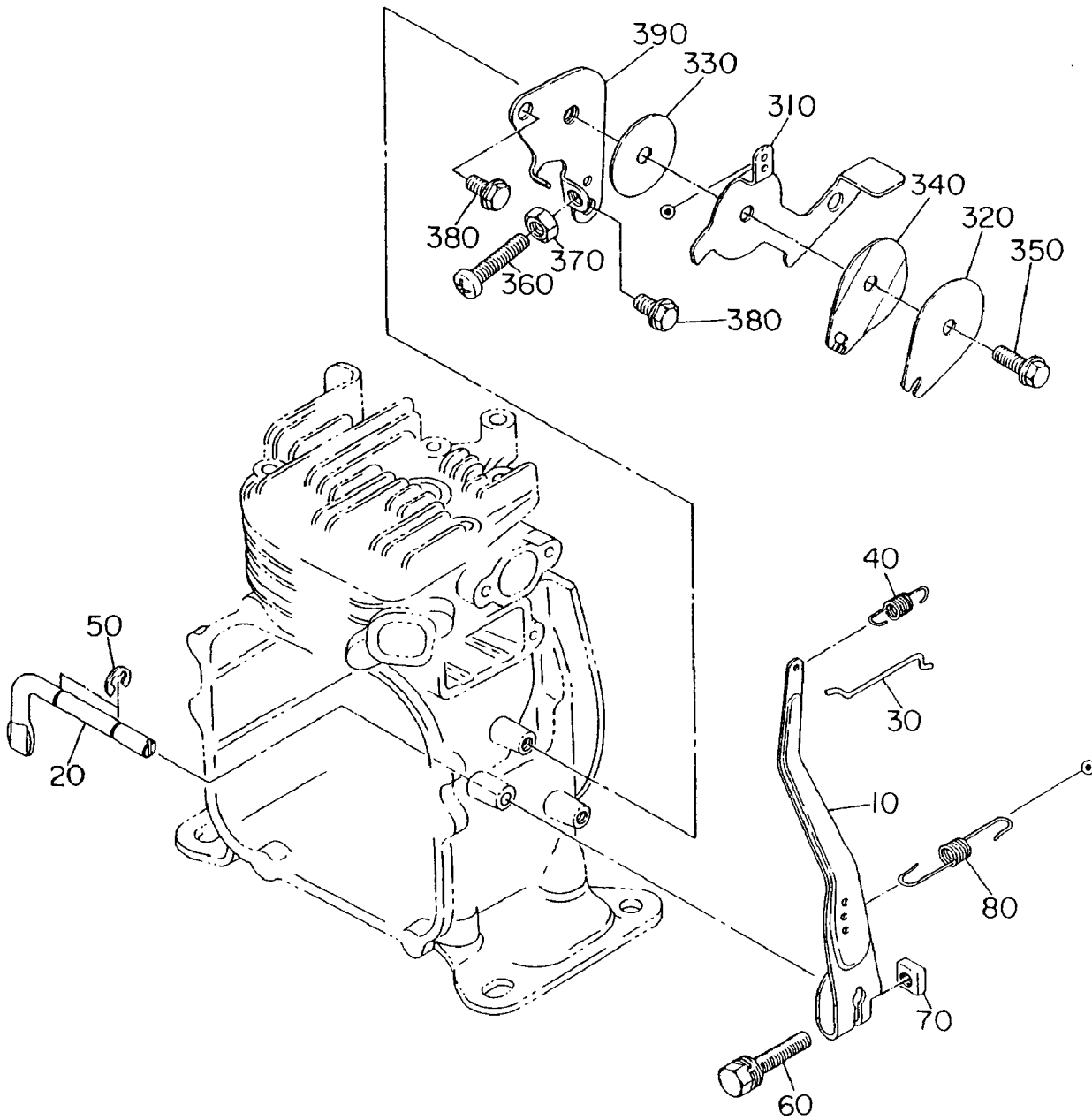
| REF. | PART NUMBER | PART NAME | QTY | REMARKS | CODE NO. FROM-TO | INTERCHANGEABLE PART NUMBER | UNIT PRICE | FIG. |
|------|--------------|----------------------|-----|---------|---------------------|--------------------------------|---------------|------|
| 10 | 230-31701-03 | CAMSHAFT | 1 | | - | | | 300 |
| 40 | 230-33301-03 | TAPPET | 2 | | - | | | 300 |
| 50 | 230-33401-03 | INTAKE VALVE | 1 | | - | | | 300 |
| 60 | 230-33501-13 | EXHAUST VALVE | 1 | | - | | | 300 |
| 70 | 230-33601-03 | VALVE SPRING | 2 | | - | | | 300 |
| 80 | 230-33701-03 | SPRING RETAINER | 2 | | - | | | 300 |
| 310 | 230-30101-12 | MUFFLER UN | 1 | | - | | | 300 |
| 320 | 230-34201-11 | MUFFLER COVER 1 CP | 1 | | - | | | 300 |
| 330 | 230-34202-11 | MUFFLER COVER 2 CP | 1 | | - | | | 300 |
| 340 | 011-00600-10 | FLANGE BOLT | 4 | | - | | | 300 |
| 350 | 011-00601-01 | FLANGE BOLT | 1 | | - | | | 300 |
| 360 | 011-00601-11 | FLANGE BOLT | 1 | | - | | | 300 |
| 510 | 230-32801-00 | AIR CLEANER AY | 1 | | - | | | 310 |
| - 2 | 230-32620-08 | PACKING | 1 | | - | | | 310 |
| - 6 | 106-32738-08 | LABEL | 1 | | - | | | 310 |
| 520 | 226-32610-07 | ELEMENT SET | 1 | | - | | | 310 |
| 530 | 230-36003-03 | GASKET (AIR CLEANER) | 1 | | - | | | 300 |
| 540 | 230-35201-01 | GASKET CP(EXHAUST) | 1 | | - | | | 300 |
| 550 | 230-32902-03 | INSULATOR | 1 | | - | | | 300 |
| 560 | 230-35901-03 | GASKET (INSULATOR) | 1 | | - | | | 300 |
| 570 | 230-35902-03 | GASKET 2 (INSULATOR) | 1 | | - | | | 300 |
| 580 | 002-38060-00 | FLANGE NUT | 2 | | - | | | 300 |
| | | | | | | | | |
| | | | | | | | | |
| | | | | | | | | |
| | | | | | | | | |
| | | | | | | | | |
| | | | | | | | | |
| | | | | | | | | |
| | | | | | | | | |
| | | | | | | | | |
| | | | | | | | | |
| | | | | | | | | |
| | | | | | | | | |
| | | | | | | | | |
| | | | | | | | | |
| | | | | | | | | |

93/09/28

EY080YD0030 EX, R/A-STD. .

GOVERNOR, OPERATE GROUP

FIG. 400



GOVERNOR. OPERATION

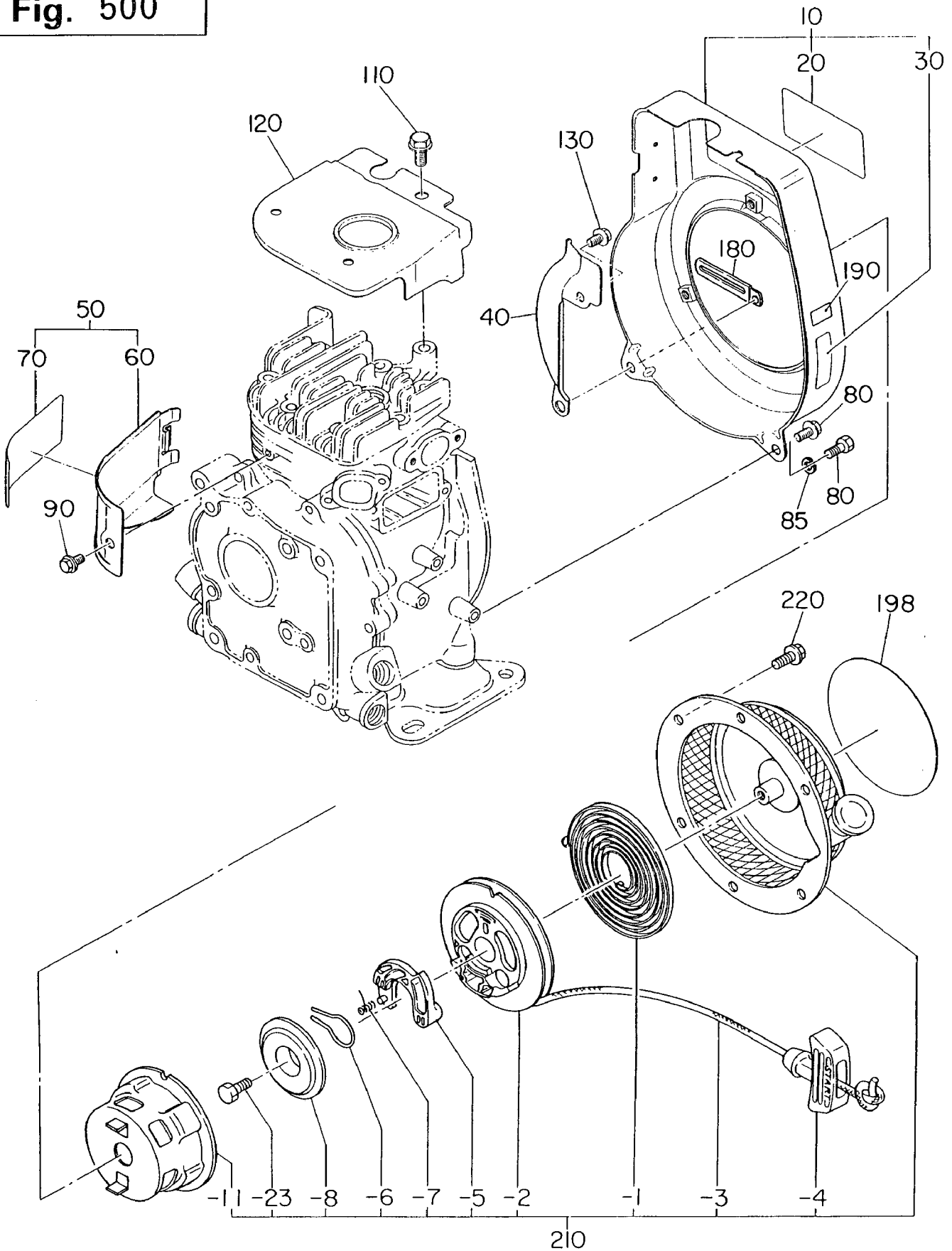
| REF. | PART NUMBER | PART NAME | QTY | REMARKS | CODE NO. FROM-TO | INTERCHANGEABLE PART NUMBER | UNIT PRICE | FIG. |
|------|--------------|--------------------|-----|---------|---------------------|--------------------------------|---------------|------|
| 10 | 230-42301-01 | GOVERNOR LEVER CP | 1 | | - | | | 400 |
| 20 | 230-42201-03 | GOVERNOR SHAFT | 1 | | - | | | 400 |
| 30 | 230-42701-01 | GOVERNOR ROD CP | 1 | | - | | | 400 |
| 40 | 230-42801-03 | ROD SPRING | 1 | | - | | | 400 |
| 50 | 003-13050-00 | CLIP | 2 | | - | | | 400 |
| 60 | 001-14062-50 | BOLT AND WASHER AY | 1 | | - | 004-35062-50 | | 400 |
| 70 | 018-60600-20 | NUT | 1 | | - | | | 400 |
| 80 | 230-42501-01 | GOVERNOR SPRING CP | 1 | | - | | | 400 |
| 310 | 230-43301-11 | SPEED CONTROL CP | 1 | | - | | | 400 |
| 320 | 227-43501-13 | STOP PLATE | 1 | | - | | | 400 |
| 330 | 021-70600-30 | FRICTION WASHER | 1 | | - | | | 400 |
| 340 | 227-45002-03 | SPRING WASHER | 1 | | - | | | 400 |
| 350 | 011-00600-30 | FLANGE BOLT | 1 | | - | | | 400 |
| 360 | 004-31063-00 | SCREW | 1 | | - | | | 400 |
| 370 | 002-27060-00 | NUT | 1 | | - | | | 400 |
| 380 | 011-00600-10 | FLANGE BOLT | 2 | | - | | | 400 |
| 390 | 230-45001-01 | BASE PLATE CP | 1 | | - | | | 400 |
| | | | | | | | | |
| | | | | | | | | |
| | | | | | | | | |
| | | | | | | | | |
| | | | | | | | | |
| | | | | | | | | |
| | | | | | | | | |
| | | | | | | | | |
| | | | | | | | | |
| | | | | | | | | |
| | | | | | | | | |
| | | | | | | | | |
| | | | | | | | | |
| | | | | | | | | |
| | | | | | | | | |
| | | | | | | | | |
| | | | | | | | | |
| | | | | | | | | |
| | | | | | | | | |
| | | | | | | | | |
| | | | | | | | | |
| | | | | | | | | |
| | | | | | | | | |
| | | | | | | | | |
| | | | | | | | | |
| | | | | | | | | |
| | | | | | | | | |
| | | | | | | | | |
| | | | | | | | | |
| | | | | | | | | |
| | | | | | | | | |
| | | | | | | | | |

93/09/28

EY080YD0030 EX. R/A-STD. .

COOLING, STARTING GROUP

Fig. 500



COOLING, STARTING

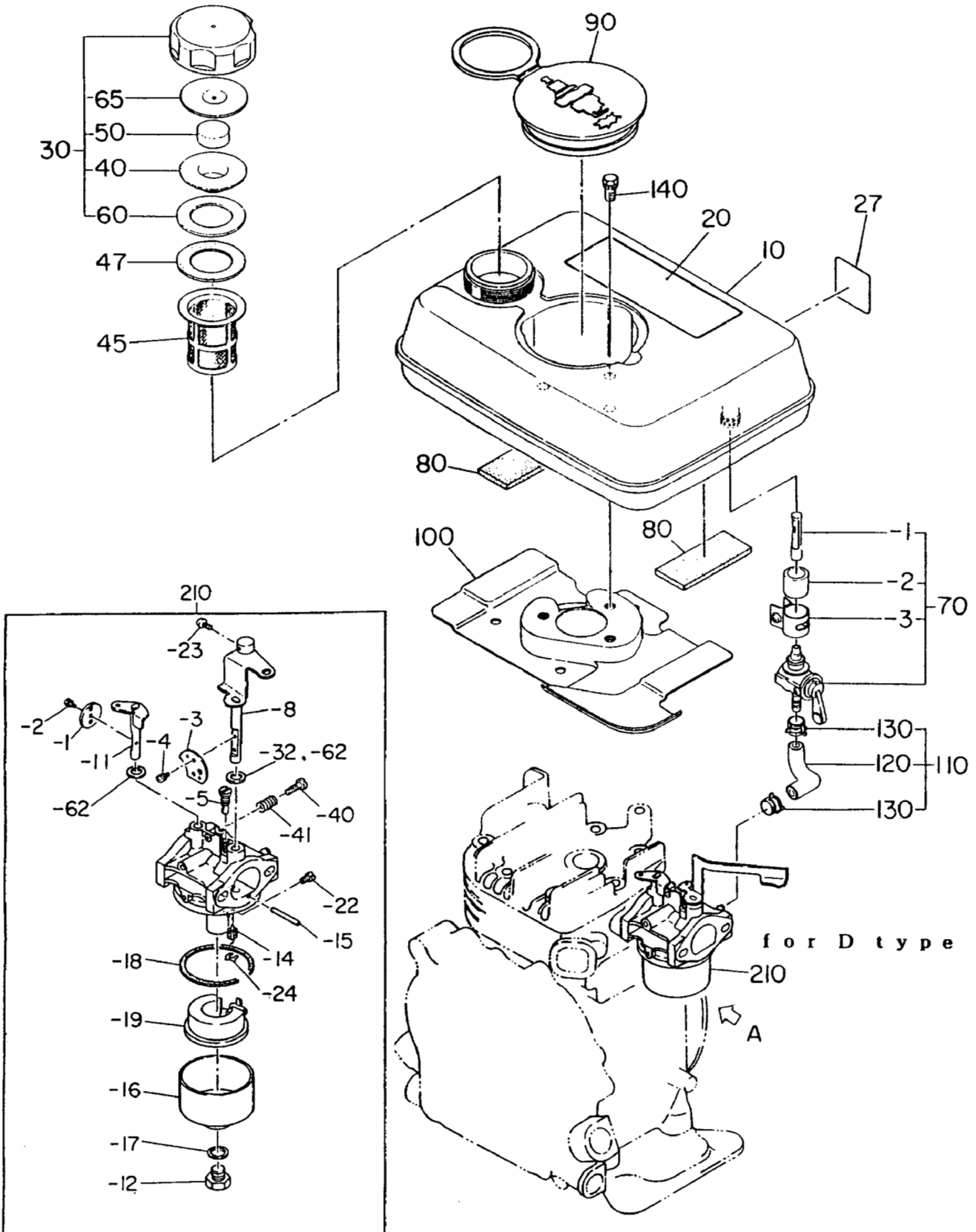
| REF. | PART NUMBER | PART NAME | QTY | REMARKS | CODE NO. FROM-TO | INTERCHANGEABLE PART NUMBER | UNIT PRICE | FIG. |
|------|--------------|--------------------|-----|---------|------------------|-----------------------------|------------|------|
| 10 | 230-51264-01 | BLOWER HOUSING CP | 1 | | - | | | 500 |
| 20 | 230-91720-03 | LABEL (TRADE MARK) | 1 | | - | | | 500 |
| 30 | 073-20019-90 | LABEL (OPERATION) | 1 | | - | | | 500 |
| 40 | 230-55001-03 | BLOWER GUIDE | 1 | | - | | | 500 |
| 50 | 230-52601-03 | CYLINDER BAFFLE | 1 | | - | | | 500 |
| 80 | 011-00600-10 | FLANGE BOLT | 2 | | - | | | 500 |
| 90 | 011-00600-10 | FLANGE BOLT | 1 | | - | | | 500 |
| 110 | 011-00600-30 | FLANGE BOLT | 1 | | - | | | 500 |
| 120 | 230-52701-03 | HEAD COVER | 1 | | - | | | 500 |
| 130 | 011-00600-10 | FLANGE BOLT | 1 | | - | | | 500 |
| 198 | 073-20036-10 | LABEL, L. O. W. | 1 | | - | | | 500 |
| 210 | 230-50211-00 | RECOIL STARTER AY | 1 | | - | | | 500 |
| - 1 | 230-50116-08 | SPIRAL SPRING | 1 | | - | | | 500 |
| - 2 | 230-50120-08 | REEL | 1 | | - | | | 500 |
| - 3 | 230-50111-08 | STARTER ROPE | 1 | | - | | | 500 |
| - 4 | 230-50100-08 | STARTER KNOB | 1 | | - | | | 500 |
| - 5 | 230-50128-08 | RATCHET | 1 | | - | | | 500 |
| - 6 | 230-50131-08 | FRICTION SPRING | 1 | | - | | | 500 |
| - 7 | 230-50135-08 | RETURN SPRING | 1 | | - | | | 500 |
| - 8 | 230-50140-08 | FRICTION PLATE | 1 | | - | | | 500 |
| - 11 | 230-50145-08 | STARTING PULLEY | 1 | | - | | | 500 |
| - 23 | 230-50150-08 | BOLT | 1 | | - | | | 500 |
| 220 | 011-00600-10 | FLANGE BOLT | 3 | | - | | | 500 |
| | | | | | | | | |
| | | | | | | | | |
| | | | | | | | | |
| | | | | | | | | |
| | | | | | | | | |
| | | | | | | | | |
| | | | | | | | | |
| | | | | | | | | |
| | | | | | | | | |
| | | | | | | | | |
| | | | | | | | | |
| | | | | | | | | |
| | | | | | | | | |
| | | | | | | | | |
| | | | | | | | | |
| | | | | | | | | |
| | | | | | | | | |
| | | | | | | | | |
| | | | | | | | | |
| | | | | | | | | |
| | | | | | | | | |

93/09/28

EY080YD0030 EX. R/A-STD. .

FUEL, LUBRICANT GROUP

FIG. 600



FUEL, LUBRICANT GROUP

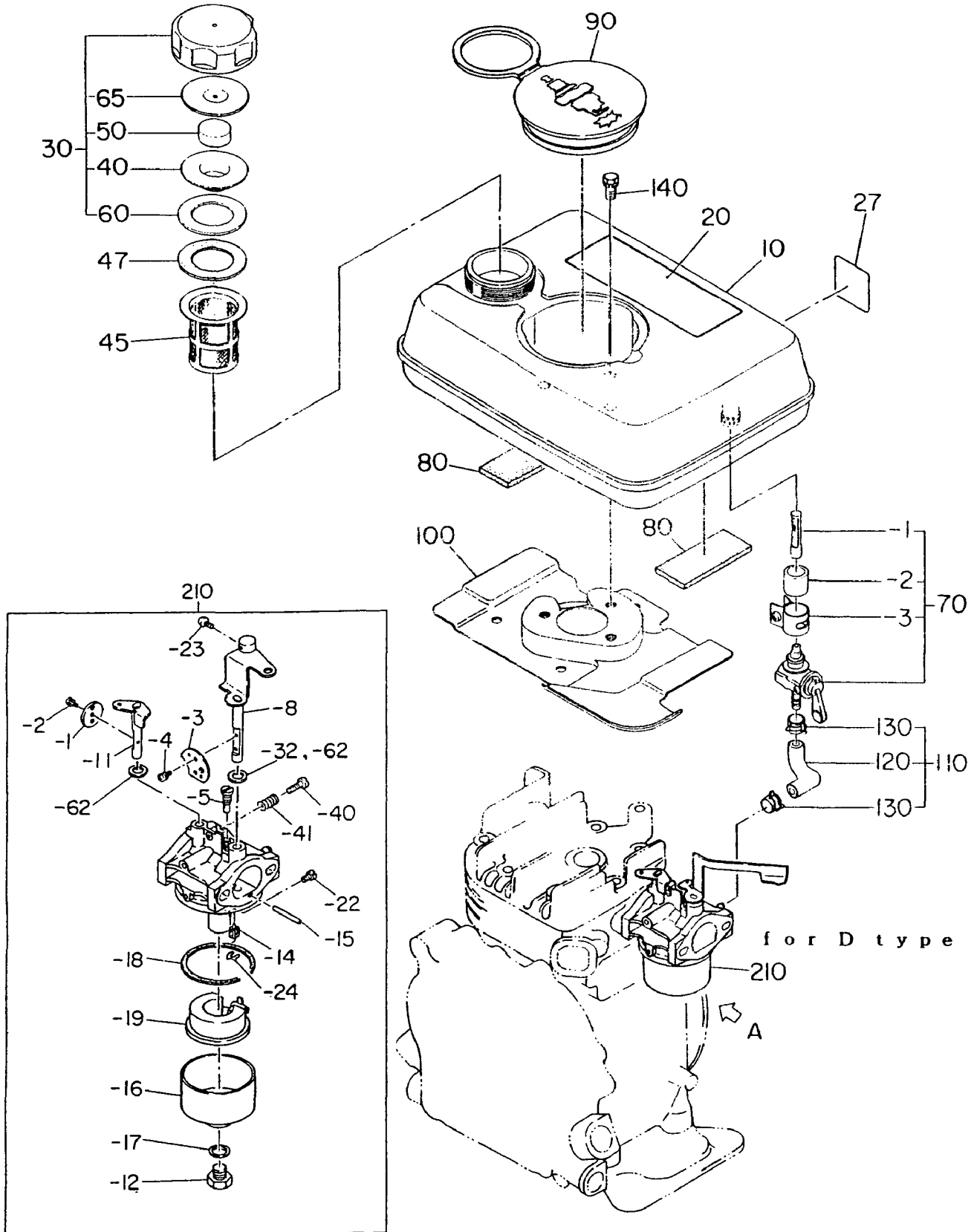
| REF. | PART NUMBER | PART NAME | QTY | REMARKS | CODE NO. FROM-TO | INTERCHANGEABLE PART NUMBER | UNIT PRICE | FIG. |
|------|--------------|----------------------|-----|---------|---------------------|--------------------------------|---------------|------|
| 10 | 230-60115-02 | FUEL TANK UN | 1 | | - | | | 600 |
| 26 | 073-20039-10 | LABEL(WARNING) | 1 | | - | | | 600 |
| 30 | 043-04400-80 | FUEL TANK CAP CP | 1 | | - | | | 600 |
| 40 | 043-41800-12 | INNER CAP | 1 | | - | | | 600 |
| 45 | 064-14200-40 | FUEL FILTER | 1 | | - | | | 600 |
| 47 | 021-33100-10 | GASKET(CORK) | 1 | | - | | | 600 |
| 50 | 084-12600-20 | SPONGE | 1 | | - | | | 600 |
| 60 | 021-02600-23 | GASKET(TANK CAP) | 1 | | - | | | 600 |
| 65 | 023-24200-12 | PARTITION PLATE | 1 | | - | | | 600 |
| 70 | 064-20044-02 | FUEL STRAINER AY | 1 | | - | | | 600 |
| - 21 | 064-20044-20 | FILTER V-STD | 1 | | - | | | 600 |
| - 22 | 064-20044-90 | JYJOINT PIPE V-STD | 1 | | - | | | 600 |
| - 23 | 064-20044-60 | HOSE BAND AY V-STD | 1 | | - | | | 600 |
| 80 | 230-65501-03 | FELT | 2 | | - | | | 600 |
| 90 | 230-66001-03 | PLUG COVER | 1 | | - | | | 600 |
| 100 | 230-61601-01 | FUEL TANK BRACKET CP | 1 | | - | | | 600 |
| 110 | 230-62606-01 | FUEL PIPE CP | 1 | | - | | | 600 |
| 120 | 230-68002-03 | RUBBER PIPE | 1 | | - | | | 600 |
| 130 | 056-10800-20 | HOSE CLAMP | 2 | | - | | | 600 |
| 140 | 001-13061-40 | BOLT & WASHER AY | 3 | | - | | | 600 |
| 210 | 230-62318-00 | CARBURETOR AY | 1 | | - | | | 600 |
| - 1 | 230-62536-08 | THROTTLE VALVE | 1 | | - | | | 600 |
| - 2 | 237-62451-08 | SCREW | 3 | | - | | | 600 |
| - 3 | 230-62525-08 | CHOKE VALVE | 1 | | - | | | 600 |
| - 5 | 209-62421-08 | PILOT JET | 1 | | - | | | 600 |
| - 8 | 230-62522-08 | SHAFT ASSY(CHOKE) | 1 | | - | | | 600 |
| - 9 | 230-62582-08 | PACKIN | 1 | | - | | | 600 |
| - 11 | 230-62532-08 | SHAFT ASSY(THROTTLE) | 1 | | - | | | 600 |
| - 12 | 129-62351-08 | BOLT | 1 | | - | | | 600 |
| - 14 | 226-62500-08 | NEEDLE VALVE AY | 1 | | - | | | 600 |
| - 15 | 214-62515-08 | PIN | 1 | | - | | | 600 |
| - 16 | 230-62550-08 | FLOAT CHAMBER BODY | 1 | | - | | | 600 |
| - 17 | 209-62345-08 | INSART WASHER | 1 | | - | | | 600 |
| - 18 | 230-62540-08 | PACKING | 1 | | - | | | 600 |
| - 19 | 230-62506-08 | FLOAT ASSY | 1 | | - | | | 600 |
| - 22 | 106-62403-08 | MAIN JET | 1 | | - | | | 600 |

93/09/28

EY080YD0030 EX. R/A-STD. .

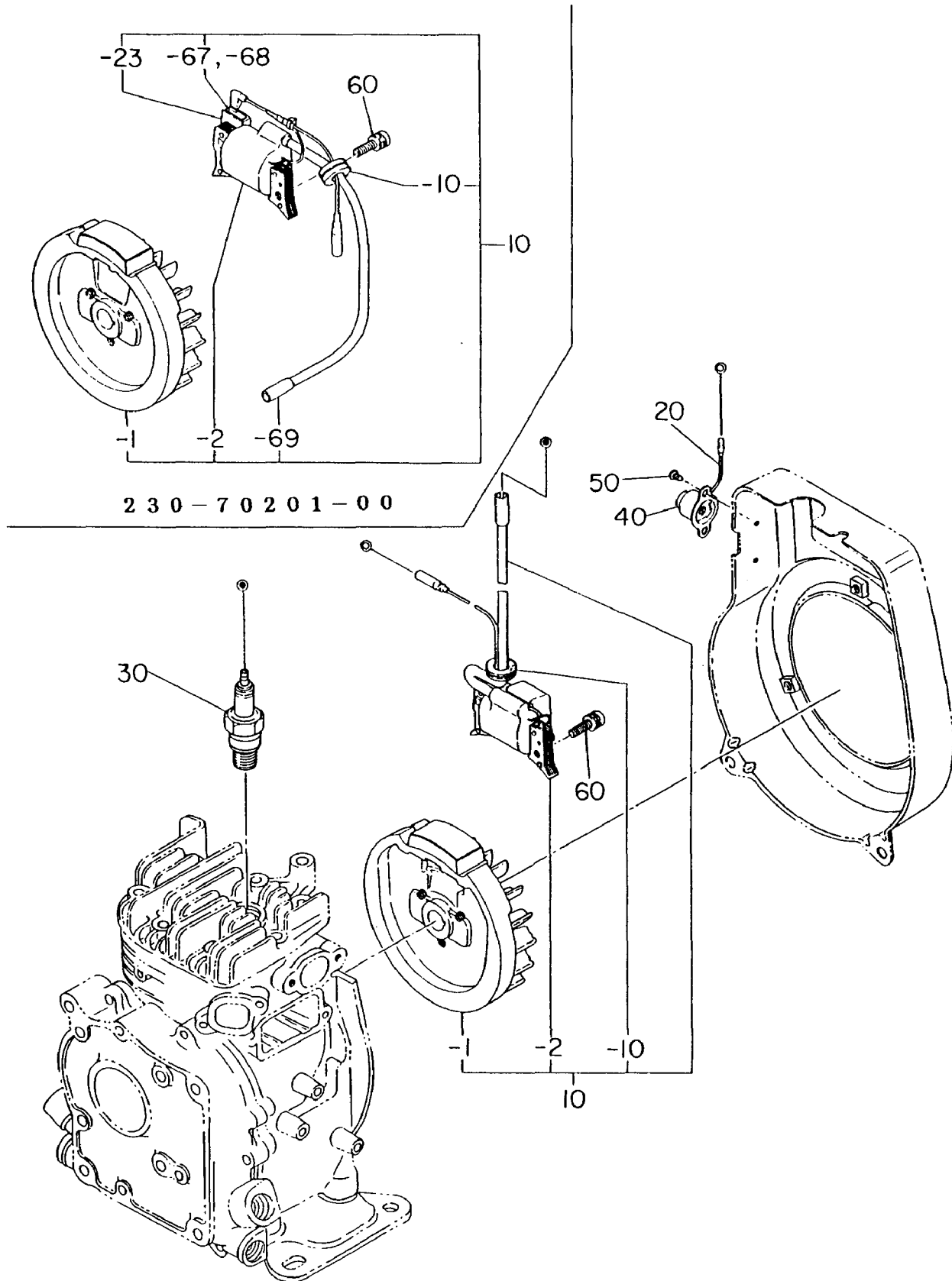
FUEL, LUBRICANT GROUP

FIG. 600



ELECTRIC DEVICE GROUP

FIG. 7 0 0



ELECTRIC DEVICE GR

| REF. | PART NUMBER | PART NAME | QTY | REMARKS | CODE NO. FROM-TO | INTERCHANGEABLE PART NUMBER | UNIT PRICE | FIG. |
|------|--------------|---------------------|-----|---------|---------------------|--------------------------------|---------------|------|
| 10 | 230-70201-30 | MAGNETO AY | 1 | | - | | | 700 |
| - 1 | 230-70125-18 | FLYWHEEL CP | 1 | | - | | | 700 |
| - 2 | 230-70132-28 | IGNITION COIL CP | 1 | | - | | | 700 |
| - 10 | 230-70245-08 | GROMMET | 1 | | - | | | 700 |
| 20 | 214-73201-01 | WIRE 1 CP | 1 | | - | | | 700 |
| 30 | 065-01403-70 | SPARK PLUG | 1 | BM4A | - | | | 700 |
| 40 | 066-20000-11 | STOP BUTTON | 1 | | - | | | 700 |
| 50 | 015-00400-10 | TAPPING SCREW | 2 | | - | 015-00400-50 | | 700 |
| 60 | 001-17062-50 | BOLT & WASHER AY | 2 | | - | 001-14062-50 | | 700 |
| 700 | 230-76301-11 | OIL SENSOR CP | 1 | | - | | | 760 |
| 710 | 230-76202-12 | CONTROLLER UN | 1 | | - | | | 760 |
| 720 | 230-78301-01 | BRACKET CP | 1 | | - | | | 760 |
| 730 | 001-11061-20 | BOLT AND WASHER AY | 1 | | - | | | 760 |
| 740 | 004-36062-00 | SCREW AND WASHER AY | 1 | | - | | | 760 |
| 750 | 002-38060-00 | FLANGE NUT | 1 | | - | | | 760 |
| 760 | 056-60002-50 | CLAMP | 1 | | - | | | 760 |
| 770 | 226-75101-03 | CLAMP | 1 | | - | | | 760 |
| 780 | 230-75801-03 | SENSOR RETAINER | 1 | | - | | | 760 |
| 790 | 004-35061-00 | SCREW AND WASHER AY | 2 | | - | | | 760 |
| | | | | | | | | |
| | | | | | | | | |
| | | | | | | | | |
| | | | | | | | | |
| | | | | | | | | |
| | | | | | | | | |
| | | | | | | | | |
| | | | | | | | | |
| | | | | | | | | |
| | | | | | | | | |
| | | | | | | | | |
| | | | | | | | | |
| | | | | | | | | |
| | | | | | | | | |
| | | | | | | | | |
| | | | | | | | | |
| | | | | | | | | |
| | | | | | | | | |
| | | | | | | | | |
| | | | | | | | | |
| | | | | | | | | |
| | | | | | | | | |
| | | | | | | | | |
| | | | | | | | | |
| | | | | | | | | |
| | | | | | | | | |
| | | | | | | | | |
| | | | | | | | | |
| | | | | | | | | |
| | | | | | | | | |
| | | | | | | | | |
| | | | | | | | | |
| | | | | | | | | |
| | | | | | | | | |
| | | | | | | | | |

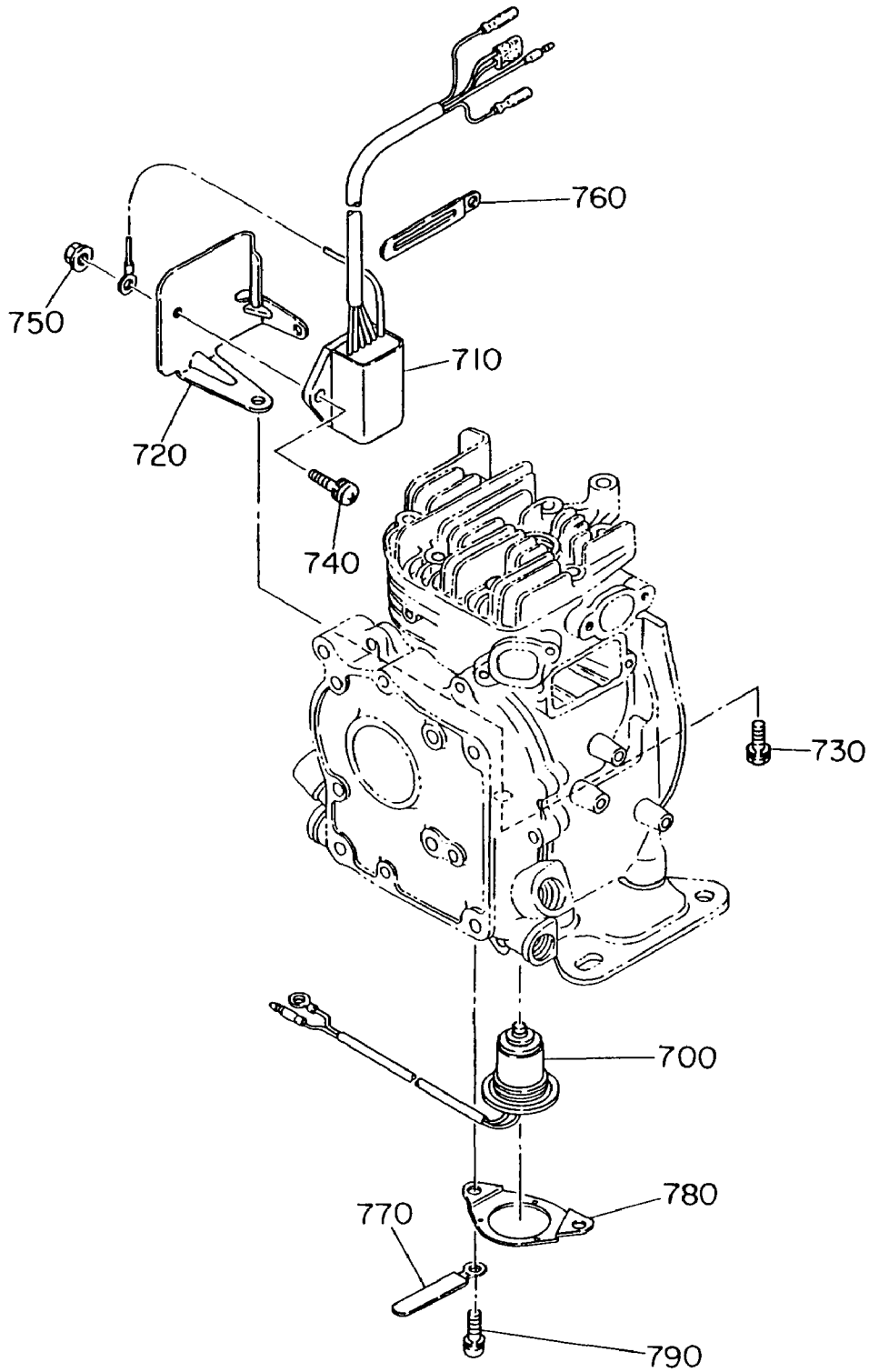
93/09/28

EY080YD0030 EX. R/A-STD. ,

ELECTRIC DEVICE GROUP

FIG. 760

オイル センサ 仕様
for OIL SENSOR



ELECTRIC DEVICE GR

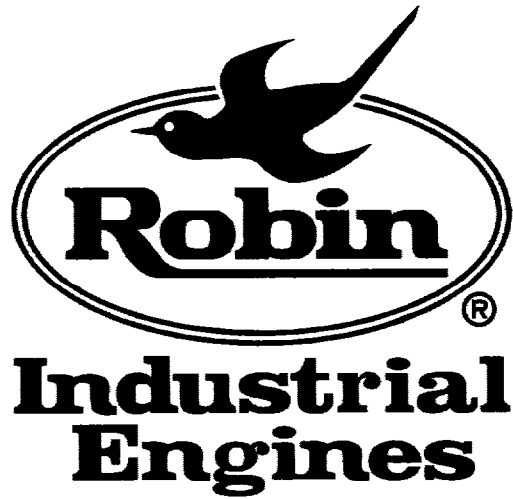
| REF. | PART NUMBER | PART NAME | QTY | REMARKS | CODE NO. FROM-TO | INTERCHANGEABLE PART NUMBER | UNIT PRICE | FIG. |
|------|--------------|---------------------|-----|---------|---------------------|--------------------------------|---------------|------|
| 10 | 230-70201-30 | MAGNETO AY | 1 | | - | | | 700 |
| - 1 | 230-70125-18 | FLYWHEEL CP | 1 | | - | | | 700 |
| - 2 | 230-70132-28 | IGNITION COIL CP | 1 | | - | | | 700 |
| - 10 | 230-70245-08 | GROMMET | 1 | | - | | | 700 |
| 20 | 214-73201-01 | WIRE 1 CP | 1 | | - | | | 700 |
| 30 | 065-01403-70 | SPARK PLUG | 1 | BM4A | - | | | 700 |
| 40 | 066-20000-11 | STOP BUTTON | 1 | | - | | | 700 |
| 50 | 015-00400-10 | TAPPING SCREW | 2 | | - | 015-00400-50 | | 700 |
| 60 | 001-17062-50 | BOLT & WASHER AY | 2 | | - | 001-14062-50 | | 700 |
| 700 | 230-76301-11 | OIL SENSOR CP | 1 | | - | | | 760 |
| 710 | 230-76202-12 | CONTROLLER UN | 1 | | - | | | 760 |
| 720 | 230-78301-01 | BRACKET CP | 1 | | - | | | 760 |
| 730 | 001-11061-20 | BOLT AND WASHER AY | 1 | | - | | | 760 |
| 740 | 004-36062-00 | SCREW AND WASHER AY | 1 | | - | | | 760 |
| 750 | 002-38060-00 | FLANGE NUT | 1 | | - | | | 760 |
| 760 | 056-60002-50 | CLAMP | 1 | | - | | | 760 |
| 770 | 226-75101-03 | CLAMP | 1 | | - | | | 760 |
| 780 | 230-75801-03 | SENSOR RETAINER | 1 | | - | | | 760 |
| 790 | 004-35061-00 | SCREW AND WASHER AY | 2 | | - | | | 760 |
| | | | | | | | | |
| | | | | | | | | |
| | | | | | | | | |
| | | | | | | | | |
| | | | | | | | | |
| | | | | | | | | |
| | | | | | | | | |
| | | | | | | | | |
| | | | | | | | | |
| | | | | | | | | |
| | | | | | | | | |
| | | | | | | | | |
| | | | | | | | | |
| | | | | | | | | |
| | | | | | | | | |
| | | | | | | | | |
| | | | | | | | | |
| | | | | | | | | |
| | | | | | | | | |
| | | | | | | | | |

93/09/28

EY080YD0030 EX. R/A-STD.

— NOTES —

— NOTES —



Robin America, Inc.

940 Lively Blvd., Wood Dale, IL 60191 • Tel: (708) 350-8200 • Fax: (708) 350-8212